

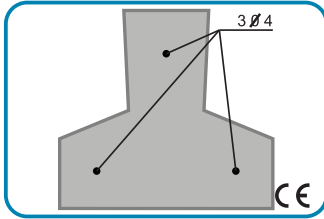
## Pré-esforço

Dimensões / Aços  
(mm)

Peso aproximado  
(kg/m)

Documento  
Homologação

### Vigotas

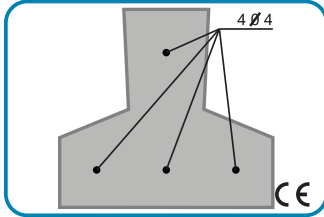


P1

113x105 - 3Ø4

18.6

DH 896

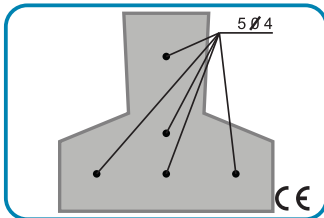


P2

113x105 - 4Ø4

18.6

DH 896

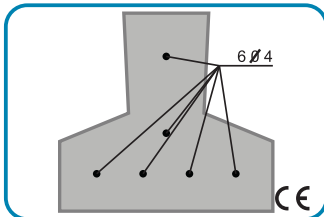


P3

113x105 - 5Ø4

18.7

DH 896

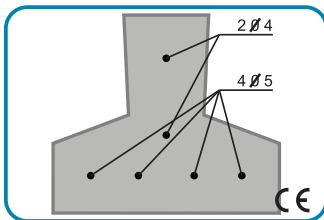


P4

113x105 - 6Ø4

18.8

DH 896



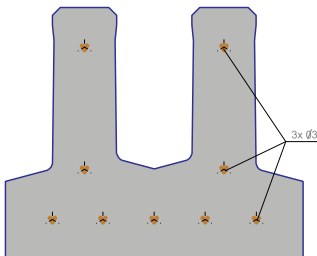
P5

120x105 - 2 Ø4+4Ø5

19.9

DH 896

### Vigotas U

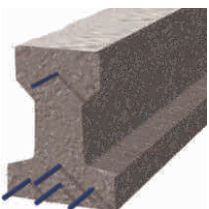


190x161 - 9 varões Ø3  
área aço:21.1 mm<sup>2</sup>

46

Estudo DEC-FCTUC

### Vigas I



160x120x90 - 4Ø5+1Ø4

32

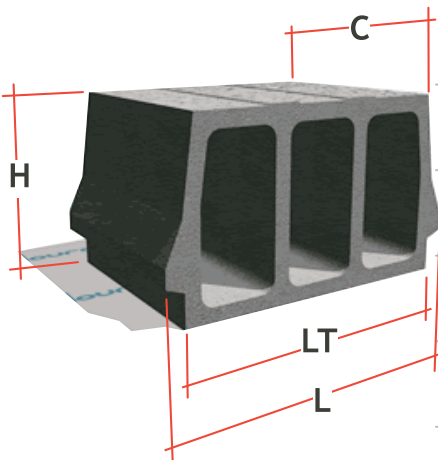
**Cofragem**

Dimensões  
(mm)

Peso aproximado  
(kg/uni)

Unidades / Palete

**Abobadilhas - Pavimentos aligeirados pré-esforçados**

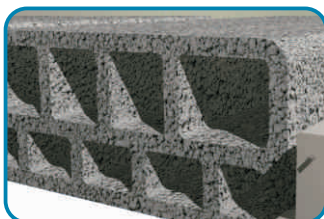


L - LT x H x C

5 fiadas Alto - 4 fiadas Alto

270 - 230x210x250	5.5	100 - 80
270 - 230x240x250	6	80 - 64
270 - 230x300x250	7	60 - --
370 - 330x120x250	5.5	120 - 96
370 - 330x150x250	6.0	105 - 84
370 - 330x180x250	6.5	90 - 72
370 - 330x210x250	7.5	75 - 60
370 - 330x240x250	8	60 - 48
370 - 330x300x250	9.5	45 - 36
440 - 400x120x250	6.5	90 - 72
440 - 400x150x250	7.5	80 - 64
440 - 400x180x250	8	70 - 56
440 - 400x210x250	9	60 - 48
440 - 400x240x250	9	50 - 40
540 - 500x150x250	8	70 - 56
540 - 500x180x250	9	60 - 48

**Abobadilhas U - Pavimentos aligeirados pré-esforçados de Vigotas U**



650 - 600x210x250	18.8	40
650 - 600x260x250	20.6	30
650 - 600x310x250	22.5	30

**Cofragem**

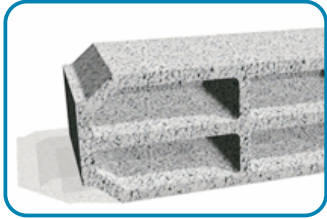
Dimensões  
(mm)

Peso aproximado  
(kg/uni)

Unidades / Palete

**BCLF - Blocos de cofragem de lajes fungiformes**

6 fiadas - 5 fiadas - 4 fiadas



800x200x267

22

.. - 30 - 24

800x250x267

28

.. - 25 - 20

800x300x267

36

.. - 20 - 16

750x150x250

17

.. - 40 - 32

750x200x250

18.5

.. - 30 - 24

750x250x250

23.7

.. - 25 - 20

750x300x250

24.5

.. - 20 - 16

750x340x250

29

.. - 20 - 16

750x400x250

29.2

.. - .. - 16



650x150x215

8.4

.. - 70 - ..

650x200x215

10.8

.. - 50 - ..

650x250x215

15

48 - 40 - ..

650x300x215

18.5

36 - 30 - ..

650x340x215

19.5

30 - 36 - 24

650x400x215

23

.. - 20 - ..



600x160x300

13.2

.. - .. - 32

600x195x300

13.4

.. - .. - 28

600x240x300

21.6

.. - .. - 24

600x300x300

23.8

.. - .. - 16

