

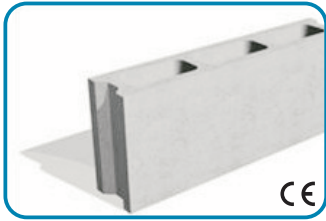
Blocos

Dimensões
(mm)

Peso aproximado
(kg/uni)

Unidades / Palete

Bloco Vazado Normal



CE

500x200x100

13

120

500x200x150

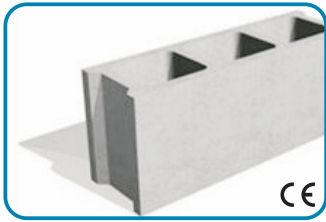
15.5

84

500x200x200

19.2

60



CE

490x190x150

16.5

84

490x190x250

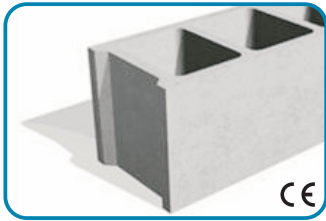
28.2

48

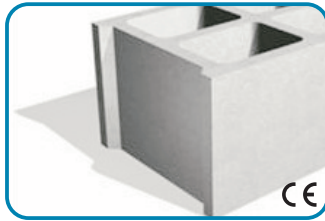
400x200x280

22

72



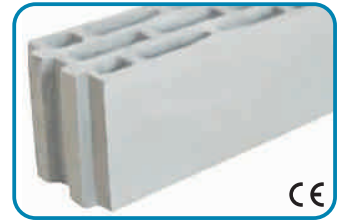
CE



CE



CE



CE

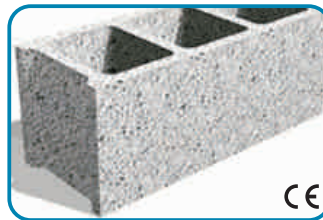
Bloco Vazado Leve



CE



CE



CE



CE

500x200x100

6.5

120

500x200x150

7.5

84

500x200x200

10.5

60

400x200x280

10

72

Blocos

Dimensões
(mm)

Peso aproximado
(kg/uni)

Unidades / Palete

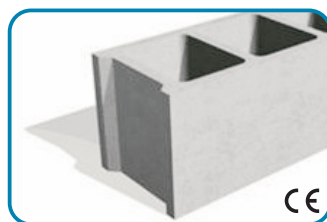
Bloco Vazado Face à Vista



CE



CE



CE



CE

500x200x100

12

120

500x200x150

15.5

84

500x200x200

19.2

60

400x200x280

22.5

72

Termoblocos



CE



CE



CE



CE

490x190x150

10

84

490x190x200

13.5

60

490x190x250

14

48

390x190x300

14

54

FT 490x200x50

5

160

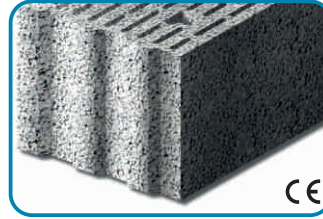
Blocos

Dimensões
(mm)

Peso aproximado
(kg/uni)

Unidades / Palete

Bloco Térmico Zenith



390x240x145

14.5

72

390x240x207

18.5

48

390x240x238

20.7

48

390x240x300

24.5

24

390x240x362

33.6

36

Bloco Acústico Zenith



390x240x238

28

48

Bloco Acústico

BA Clássico

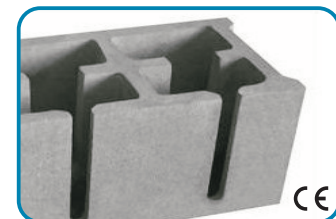


500x200x200

18.5

60

BA Silence



500x200x200

20

60

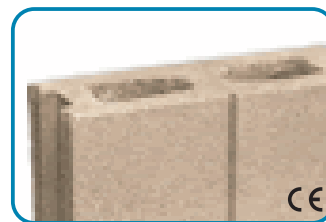
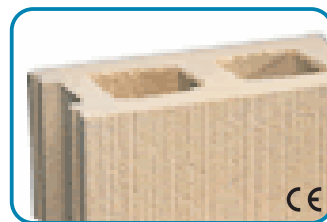
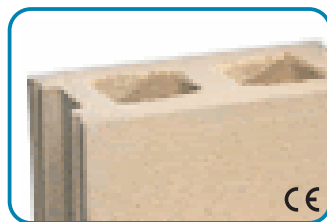
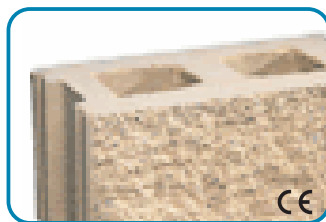
Bloco

Dimensões
(mm)

Peso aproximado
(kg/uni)

Unidades / Palete

Bloco Arquitetónico



390x190x140

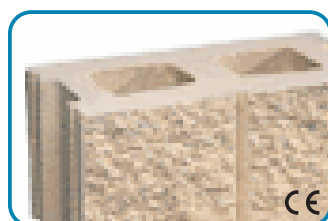
01/02/03/04/04A

14 / 15

95 / 85

Acabamento

S/SC/SR/L/LE/LR



390x190x190

01/02/03/04

18 / 19

75

Acabamento

S/SC/SR/L/LE/LR

390x190x140

05

14

95

Acabamento

S/SC/SR/L/LE/LR

390x190x190

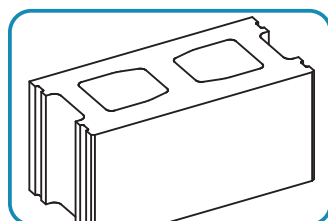
05

21.5

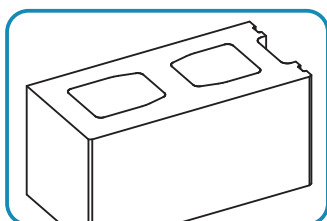
75

Acabamento

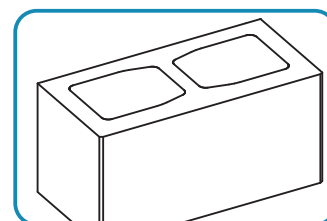
S/SC/SR/L/LE/LR



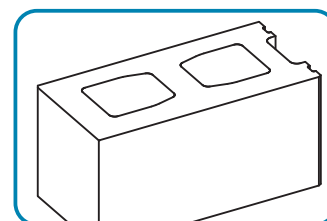
01-14
01-19



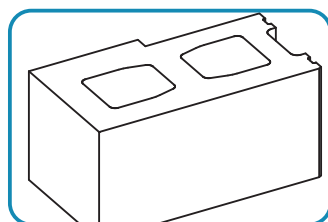
02-19



03-14
03-19

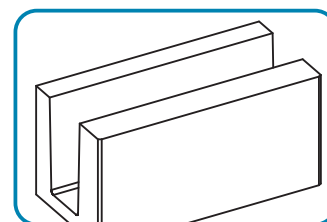


04-14
04-19



04A-14

S (Split)
SC (Split Canelado)
SR (Split Ranhurado)
L (Liso)
LE (Liso Escovado)
LR (Liso Ranhurado)



05-14
05-19